



Styles of Boxes

One of the major contributors to the versatility of cardboard is the ease with which flat sheets can be cut and formed into an immense range of package styles.

People often see style as a cost restriction, however this can often be offset by the added features and advantages such as greater strength, less board used, market appeal, end use features and closures.

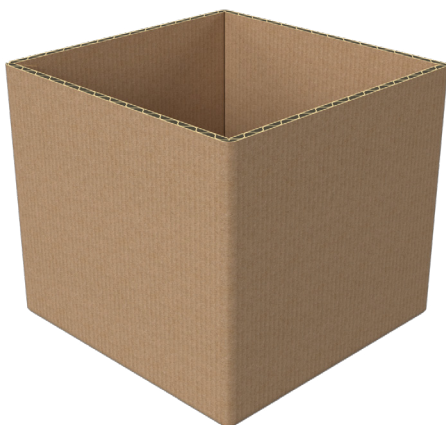
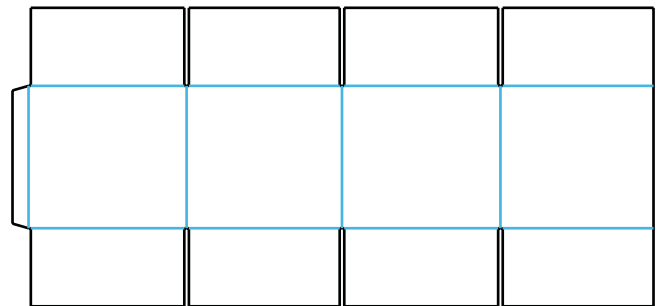
The “International Code for Fibreboard Cases” adopted by Standards Australia in 1971 outlines the numbered code system developed to allow communication on box styles irrespective of the language used in individual countries.

We have outlined the common styles in this guide.

Slotted Styles

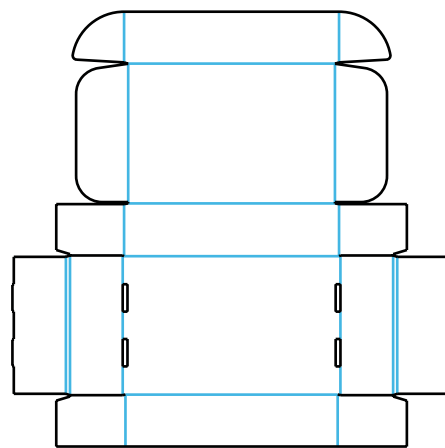
This style is made from one piece of corrugated board which is scored and slotted for assembly. These styles are glued at the manufacturing joint, and usually require tape to secure them closed top and bottom.

The most common of all corrugated box styles is known as Regular Slotted Carton (RSC). The outer flap meets in the middle when assembled. This box style is highly efficient to manufacture, with little waste and generally no set up costs.



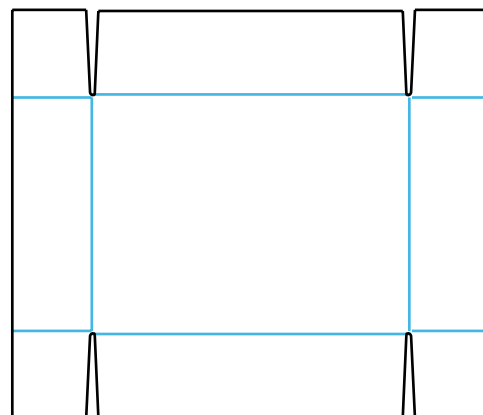
Self Locking Styles

These styles are die cut from a blank sheet of corrugated board and are folded to assemble a completely closed box. They often have locking hinges, handles, and tabs incorporated. Other alternatives include crash lock or self lock bases which “snap” together for ease of assembly without tape.



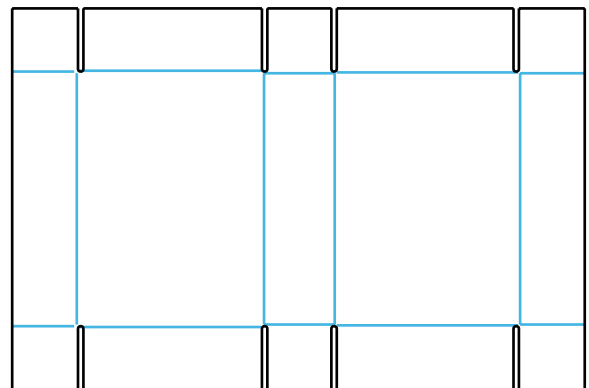
Telescopic Styles

This style consists of two separate pieces, generally a top and bottom piece as the lid and base. These styles are great for heavy objects that are difficult or awkward to lower into a conventional box (such as a television, mattress etc). The product sits in the base and the lid is placed over it.

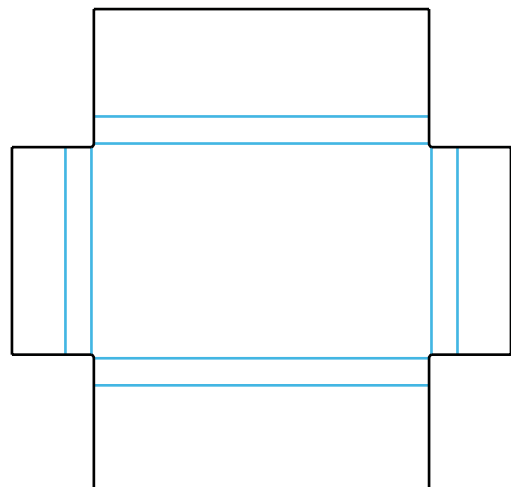


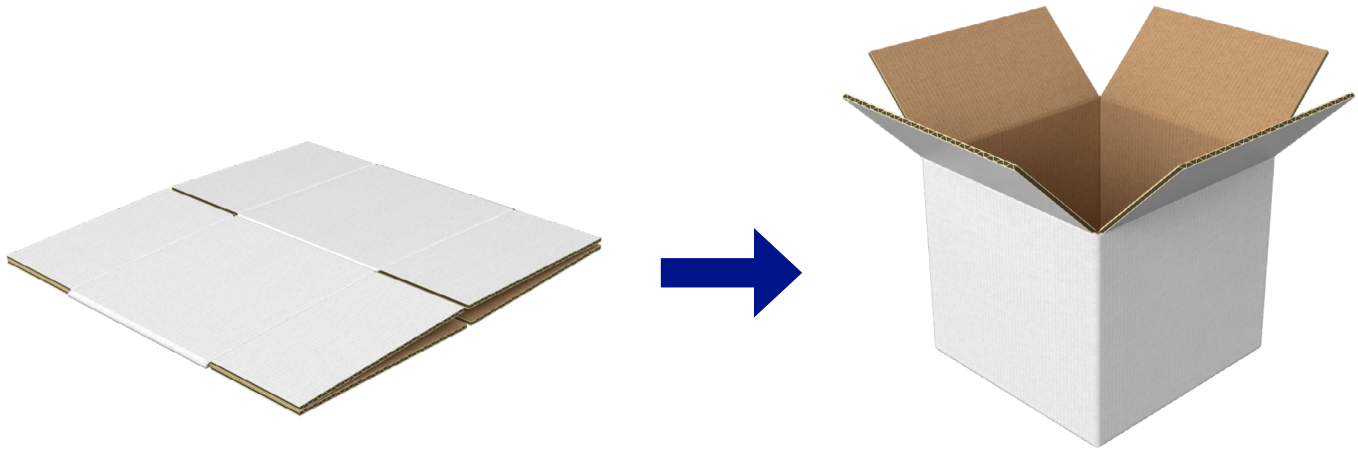
Folder Styles

Five Panel Folders (5PF) have a 5th panel that covers the entire top of the box. When sealed, three sides have several layers of board which provides extra strength. This style is suitable for long and thin items, such as televisions, picture frames, posters etc.



Maltese Cross or One Piece Folder is a single piece of board which creates a flat bottom. The extended flaps are scored, often at multiple heights, so that they wrap and enclose the item within.





Assembly Guides

Whether you're handling regular slotted cartons, half slotted cartons, full flap slotted cartons, five-panel folders, or postal mailers, this comprehensive assembly guide is designed to provide you with clear, step-by-step instructions to ensure a smooth and efficient assembly process. From understanding the structural design to mastering the folding techniques, this guide aims to equip you with the knowledge and skills necessary to assemble each type of packaging with precision and confidence.

Half Slotted Box Assembly Guide

1



This guide is correct for all dimensions of half slotted boxes.

Half slotted boxes arrive pre-glued, laid flat.

2



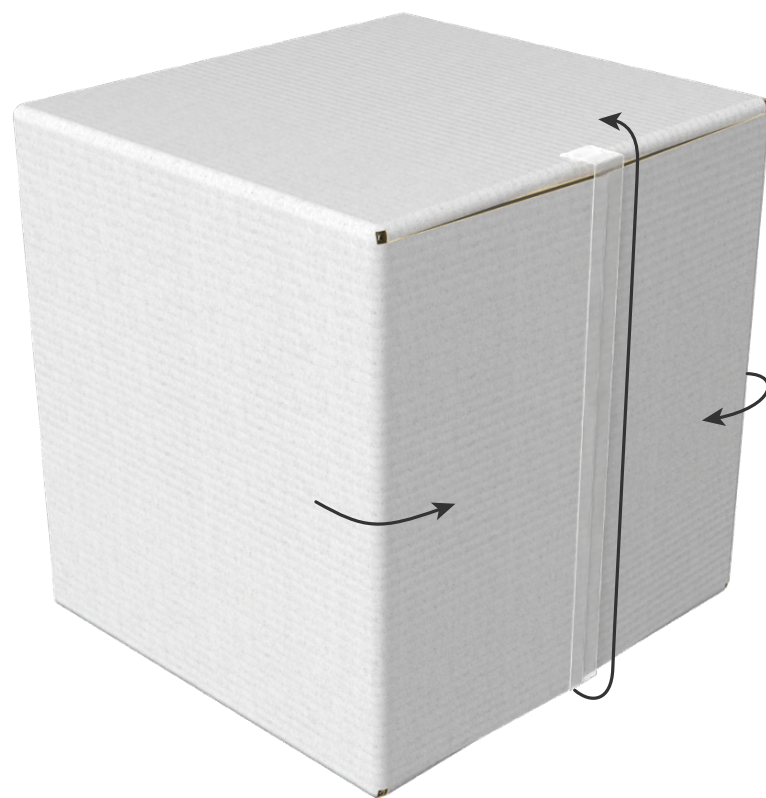
Erect the box so that it sits on one side, allowing access to the bottom flaps.

3



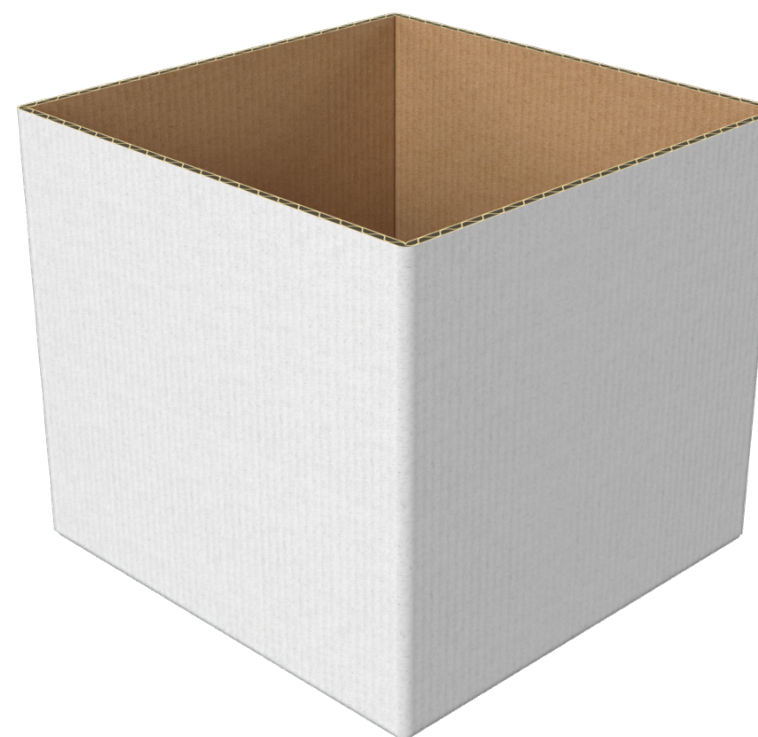
Fold the shorter flaps by 90°, partially closing the bottom of the box.

4



Fold the longer flaps by 90°, fully closing the bottom of the box. Tape along the seam to seal flaps together.

5



The half slotted box is now ready for use.

Regular Box Assembly Guide

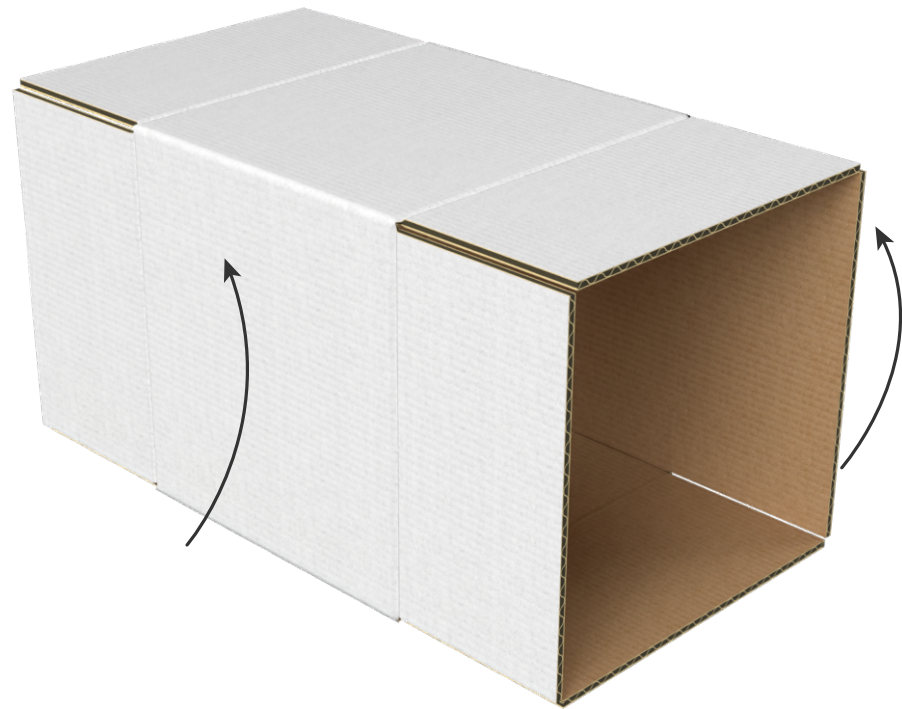
1



This guide is correct for all dimensions of regular boxes.

Regular boxes arrive pre-glued, laid flat.

2



Erect the box so that it sits on one side, allowing access to the bottom flaps.

3



Fold the shorter flaps by 90°, partially closing the bottom of the box.

4



Fold the longer flaps by 90°, fully closing the bottom of the box. Tape along the seam to seal flaps together.

5



The regular slotted box is now ready for use. To close, first fold the shorter flaps, followed by the longer.

Full Flap Box Assembly Guide

1



This guide is correct for all dimensions of full flap boxes.

Full flap boxes arrive pre-glued, laid flat.

2



Erect the box so that it sits on one side, allowing access to the bottom flaps.

3



Fold the shorter flaps by 90°, partially closing the bottom of the box.

4



Fold the longer flaps by 90°, fully closing the bottom of the box. Tape along the seam to seal the outside flap to the body of the box.

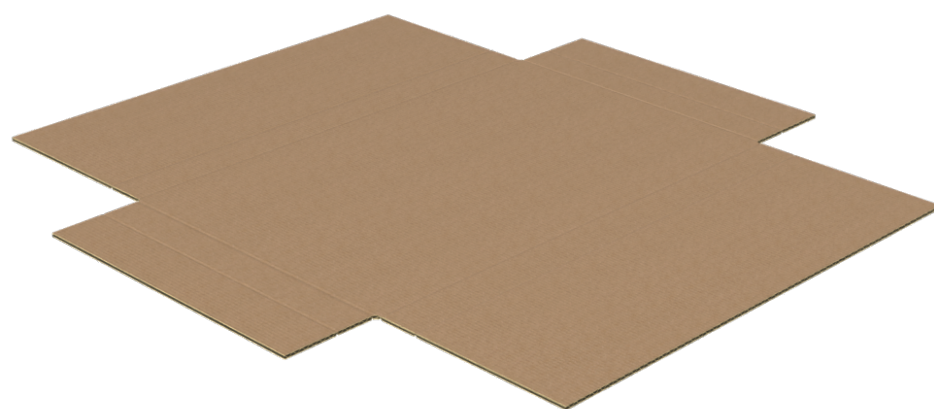
5



The full flap box is now ready for use. To close, first fold the shorter flaps, followed by the longer.

Postal Mailer Assembly Guide

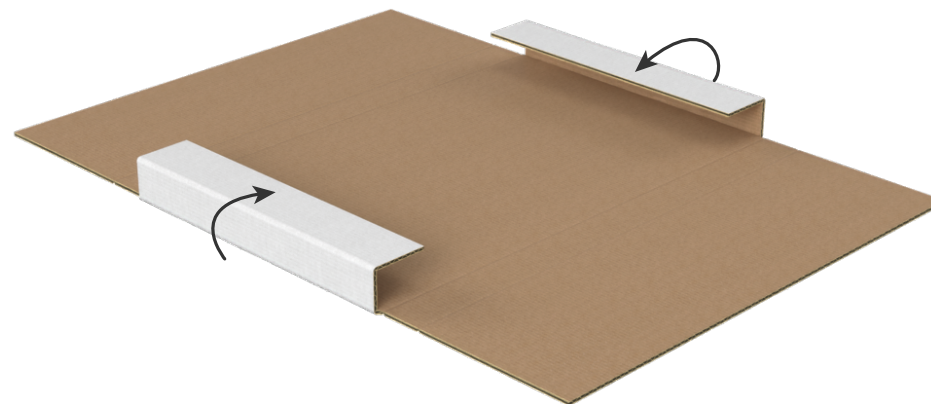
1



This guide is correct for all dimensions of postal mailers.

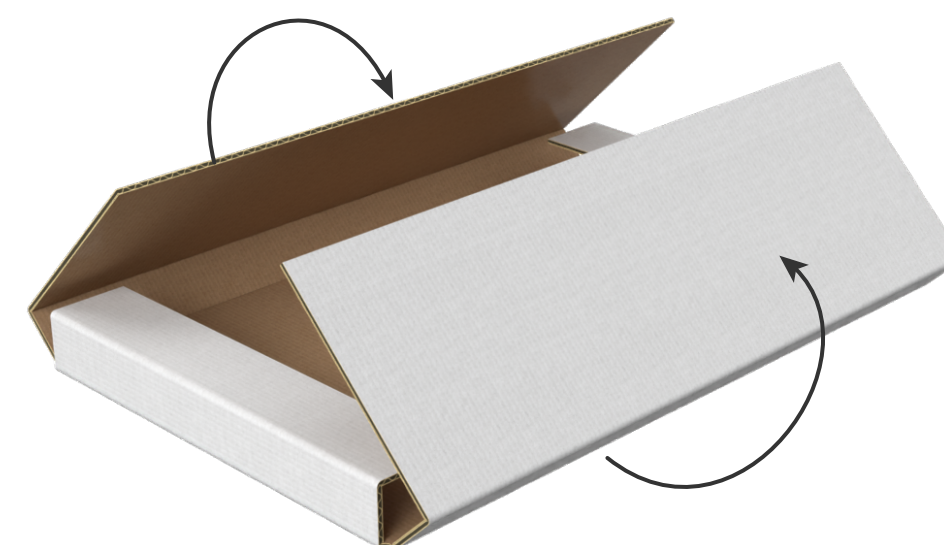
Postal mailers arrive flat.

2



Place the contents of the mailer on the middle panel, and fold the short end panels at both creases by 90°.

3



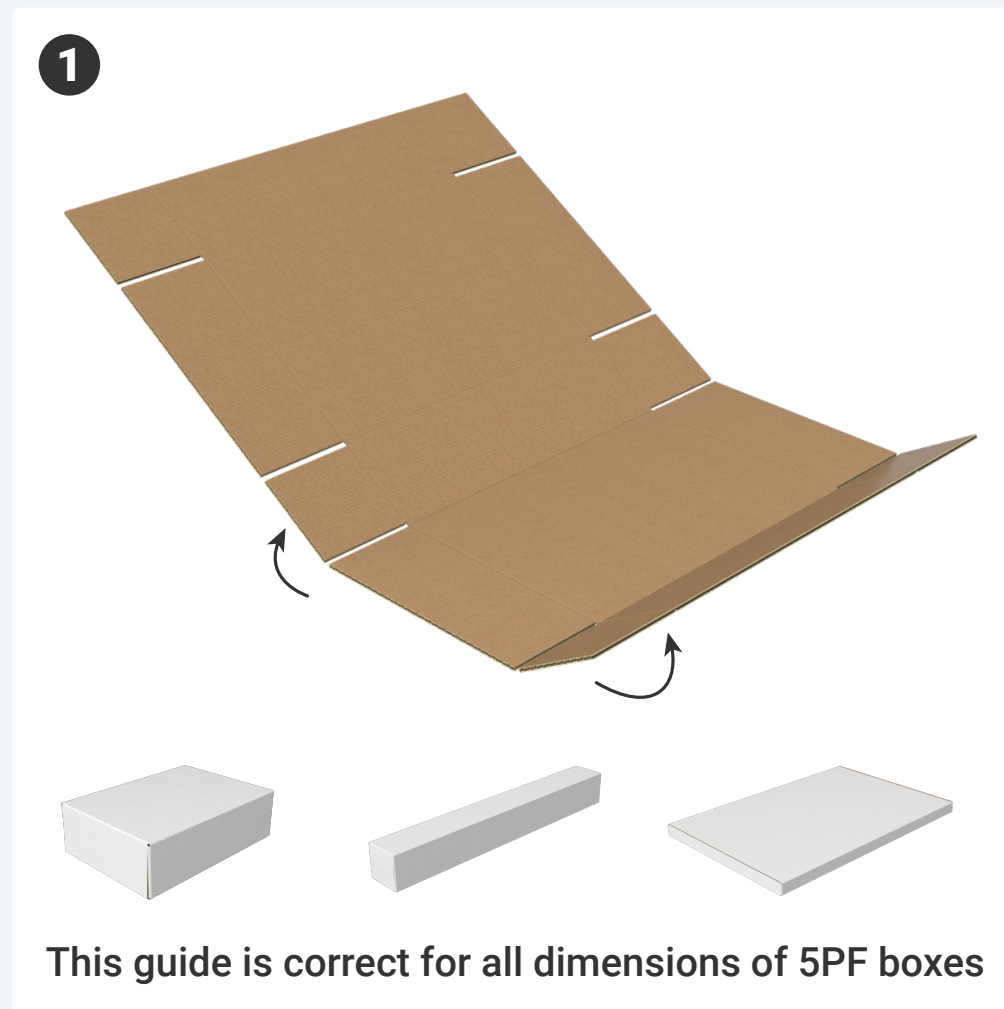
Fold the larger panels at both creases by 90°, full enclosing the postal mailer.

4



Seal the two large panels together with tape.

Five Panel Folder Assembly Guide



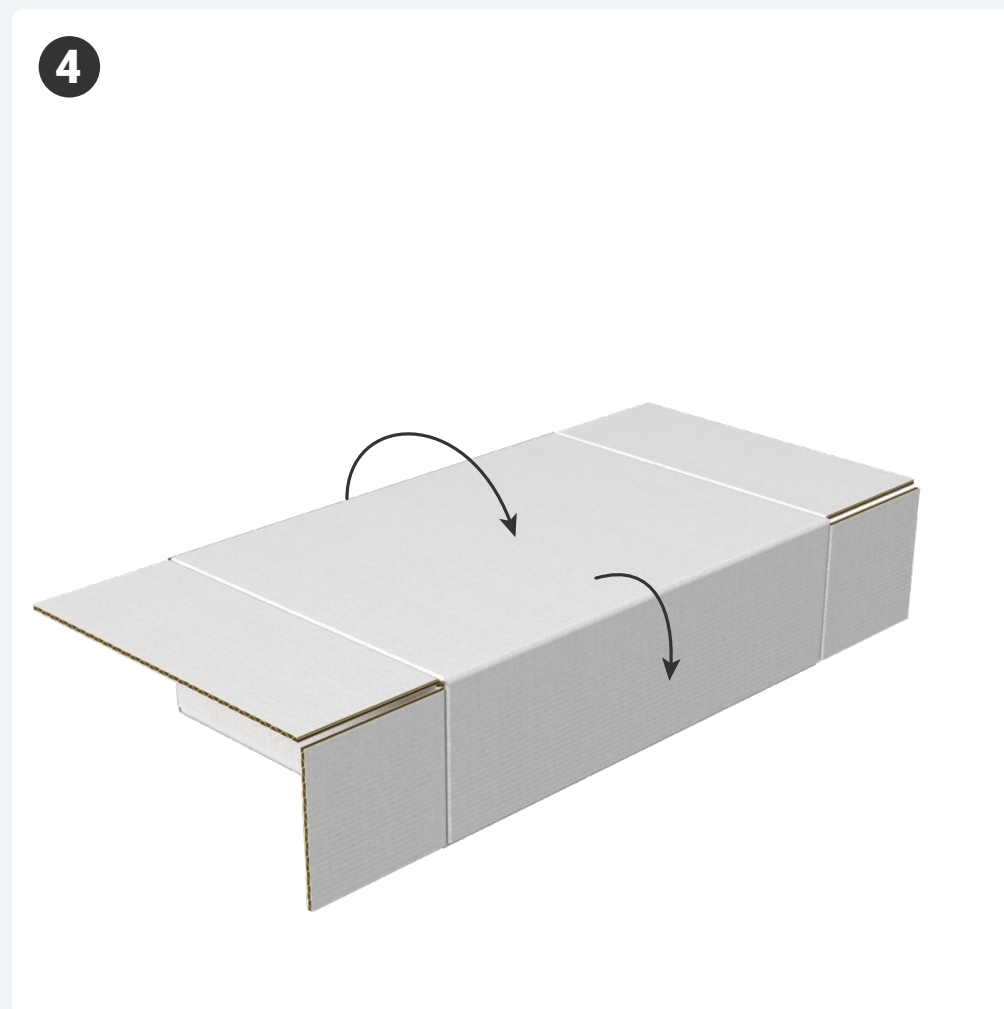
Five panel folder boxes arrive flat. Fold the front and back panels along the scores by 90°.



Attached to the front and back panels are side flaps. Fold these along the score by 90°.



Erect the outer side panels, folding along the score by 90°. Place product inside the box.



Fold the hinged lid down so it closes the box and tape along the edge.



On the lid, fold the smaller flaps along the scores by 90°. Seal with tape.



Close the lid's larger outer panels. Seal with tape.